

Travel Pocket Guide

11 – 13 March 2026

National Exhibition and Convention Center (Shanghai), China



Content

Page

01

Show Information



Page

09

Attractions



02

Visa Support



11

Useful Phrases



03

Transportation to Venue



12

Useful Information



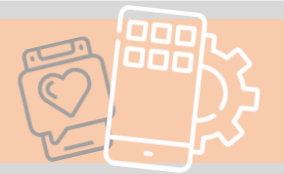
05

Official Hotel List
& Travel Agent



13

Useful App



messe frankfurt



11 – 13 March 2026

Show Name	Intertextile Shanghai Home Textiles – Spring Edition 2026 2026 中国国际家用纺织品及辅料(春夏)博览会	
Website	https://intertextile-shanghai-hometextiles-spring.hk.messefrankfurt.com/shanghai/en.html	
Venue	<p>National Exhibition and Convention Center (Shanghai) – NECC (SH)</p> <p>Tel: +86 21 6700 8888</p> <p>West Entrance: 1888 Zhuguang Road, Shanghai, China (connected with Metro Line 2 exit)</p> <p>South Entrance: 168 East Yinggang Road, Shanghai, China</p> <p>North Entrance: 333 Songze Avenue Road, Shanghai, China</p> <p>国家会展中心 (上海)</p> <p>总机: +86 21 6700 8888</p> <p>西门: 中国上海诸光路1888号</p> <p>南门: 中国上海盈港东路168号</p> <p>北门: 中国上海崧泽大道333号</p>	
Opening Hours	<p>11 March 2026 (Wednesday) 9:00am – 6:00pm</p> <p>12 March 2026 (Thursday) 9:00am – 6:00pm</p> <p>13 March 2026 (Friday) 9:00am – 6:00pm</p>	

Free of charge for trade visitors only.
Persons under 18 will not be admitted.

Nationals from **55 eligible countries** may qualify for a **240-hour visa-free transit** when traveling through China to a third destination. With valid travel documents and confirmed onward tickets, travelers can **enter through 65 designated ports and stay for up to 10 days**, allowing activities such as business meetings and sightseeing. Please verify eligibility and requirements on the official website of the National Immigration Administration.

Source:
Visa-Free Transit Policies
<https://en.nia.gov.cn/n147418/n147463/c183412/content.html>

**The information is subject to change without prior notice. All information is based on official announcements from the corresponding authority.*

Visitor

For visitors who need a [visa invitation letter](#) for visa application, please contact our official travel agent – **Shanghai Vision Expo & Meeting Solutions Co., Ltd.** to process.

Contact Person: Ms. Ealcie Gao
Tel: +86 21 5481 6051 / 5481 6052* 808
Email: invitation@shanghai-vision.com

*See P.8 for hotel booking contact information

Exhibitor

Please contact the organiser for more information of the visa invitation letter.

Transportation to Venue



Air

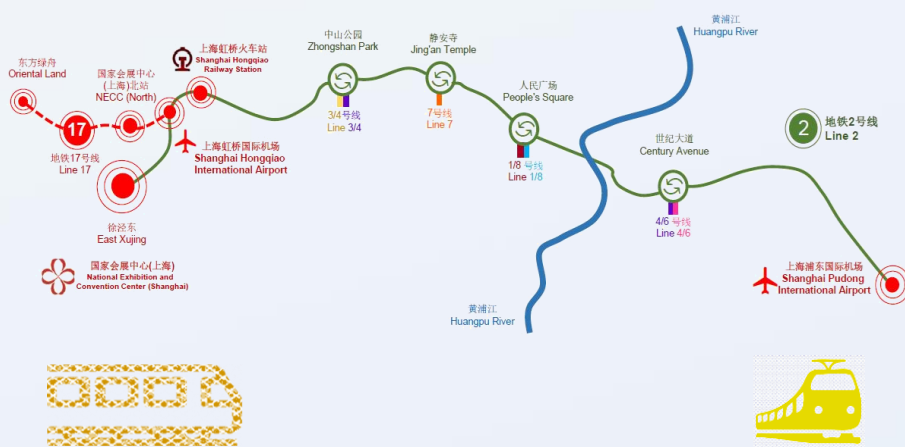
From the Hongqiao Airport (Terminal 2)
 --- Approximately 3 km
 Taxi: About 15 minutes
 Metro: Take Line 2 and get off at Xujingdong / Xujing East Metro Station (徐泾东站)

From Pudong International Airport
 --- Approximately 61 km
 Taxi: About 90 minutes
 Metro: Take Line 2 and get off at Xujingdong / Xujing East Metro Station (徐泾东站)



Metro

Take Line 2 and get off at Xujingdong/East Xujing Station (徐泾东站)



Railway

From Shanghai Hongqiao Railway Station
 --- Approximately 2 km
 Metro: Take Line 2 and get off at Xujingdong / Xujing East Metro Station (徐泾东站)

From Shanghai Railway Station
 --- Approximately 22 km
 Metro: Take Line 4 (Outer Loop) to Zhongshan Park (中山公园), change to Line 2 and get off at Xujingdong / Xujing East Metro Station (徐泾东站)

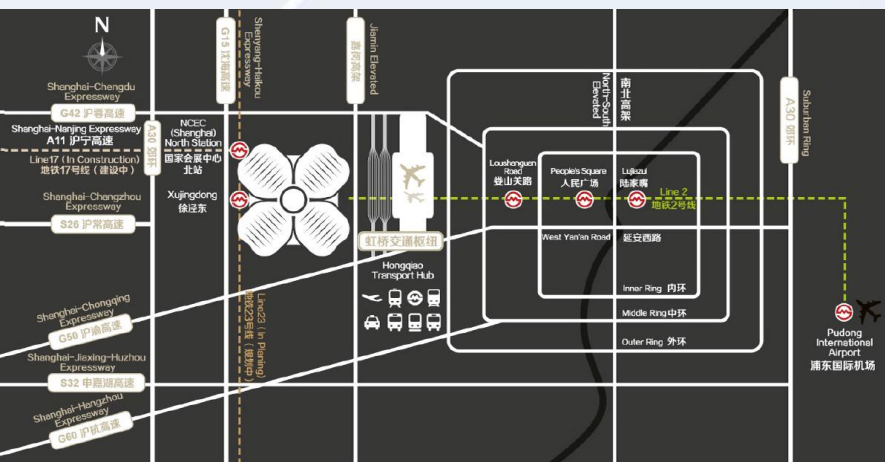
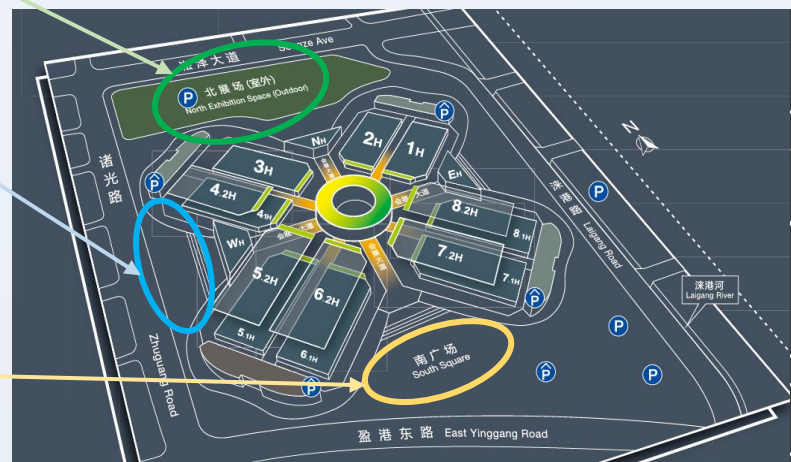
From Shanghai South Railway Station
 --- Approximately 24 km
 Metro: Take Line 3 to Zhongshan Park (中山公园), change to Line 2 and get off at Xujingdong / Xujing East Metro Station (徐泾东站)



Taxi

Please show the Chinese address of the venue's **North Entrance**, **West Entrance**, or **South Entrance** to taxi driver:

- North Entrance:**
 请带我去:
 国家会展中心(上海)北门
 中国上海崧泽大道333号
- West Entrance:**
 请带我去:
 国家会展中心(上海)西门
 中国上海诸光路1888号
- South Entrance:**
 请带我去:
 国家会展中心(上海)南门
 中国上海盈港东路168号





1. InterContinental Shanghai NECC



Located in the heart of Shanghai Hongqiao CBD, the hotel is the only luxury hotel in the dazzling National Exhibition and Convention Center (Shanghai). The hotel is just 8 kilometers from Hongqiao International Airport and adjacent to the Hongqiao transportation hub. It is also just steps away from Metro Line 2, which is connecting guests to all of Shanghai's commercial districts. The hotel features 536 contemporary guestrooms, four eclectic restaurants and lounges, a luxury spa and an indoor pool.

📍 1700 Zhuguang Road, Shanghai

Distance to NECC: 5 mins on walk

Drive distance to Pudong Int'l Airport: 60 mins

Drive distance to Hongqiao Int'l Airport: 25 mins

2. Primus Hotel Shanghai Hongqiao



Adjacent to National Exhibition and Convention Center Shanghai (NECC) within 500 meters walking distance from the hotel. The hotel is only 2 km to Shanghai Hongqiao Railway Station, 2.5 km to Shanghai Hongqiao International Airport and 800 meters walking distance to metro station. Primus Hotel Shanghai Hongqiao has 393 rooms, including 39 suites. Each room is equipped with KING KOIL bed mattress & beddings, JBL stereo set and Nespresso coffee machine.

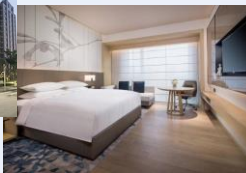
📍 100 Lane 1588, Zhuguang Road Shanghai

Distance to NECC: 10 mins by taxi

Drive distance to Pudong Int'l Airport: 60 mins

Drive distance to Hongqiao Int'l Airport: 15 mins

3. Courtyard by Marriott Hongqiao



Located in the west side of Hongqiao CBD, Courtyard by Marriott Shanghai Hongqiao is situated adjacent to the National Exhibition Convention & Center. With public transportation; the hotel is a fixture that will drive the business and commercial development of Qingpu District. Only 5 minutes down the road is the National Convention & Exhibition Center. Hotel shuttle service is available to exhibition guests. Also, down the road is East Xujing Station, terminus station for Metro Line 2, Linking visitors directly to People's Square and Lujiazui Financial District, as well as Pudong International Airport.

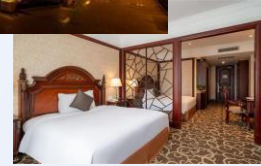
📍 333 Panwen Road, Shanghai

Distance to NECC: 8 mins by taxi

Drive distance to Pudong Int'l Airport: 60 mins

Drive distance to Hongqiao Int'l Airport: 25 mins

4. Wyndham Shanghai Hongqiao



Located just opposite Hongqiao Int'l Airport Terminal 2, Wyndham Shanghai Hongqiao offers a range of rooms from singles to suites. Rooms are furnished and designed in a classy, yet modern fashion. They also offer guests a free continental breakfast buffet to help guests start the day right. Guests can also take advantage of the gym for a little exercise or go to the spa or salon to be pampered.

📍 1989 Huaxiang Road, Shanghai

Distance to NECC: 8 mins by taxi

Drive distance to Pudong Int'l Airport: 70 mins

Drive distance to Hongqiao Int'l Airport: 10 mins

5. The QUBE Hotel Shanghai Hongqiao



Adjacent to National Exhibition and Convention Center Shanghai (NECC) within 500 meters from the hotel. The hotel is only 2 km to Shanghai Hongqiao Railway Station, 2.5 km to Shanghai Hongqiao International Airport and 800 meters walking distance to metro station. The hotel features 287 rooms including suites. Each room is equipped with bed mattress & beddings from KING KOIL, Free Wi-Fi and flat-screen TV with various international channels. Executive Lounge is privately featured for club floor guest. 24-hour Fitness Center is open to keep your fit.

📍 200 Lane 1588 Zhuguang Road, Shanghai

Distance to NECC: 10 mins by taxi

Drive distance to Pudong Int'l Airport: 60 mins

Drive distance to Hongqiao Int'l Airport: 15 mins



6. Holiday Inn Shanghai West



The Holiday Inn Shanghai West (Shanghai Xijiao Jiari Jiudian) is located near the Metro Line 2's East Xujing station and a ten-minute drive from Hongqiao International Airport under normal traffic condition. The Holiday Inn has contemporarily designed guest rooms which feature high speed broadband and wireless internet access, LCD TVs with satellite channels, international direct dial phones and voicemail, in room safes, hairdryers, mini bars.

📍 2000 Huqingping Road, Shanghai

Distance to NECC: 15 mins by taxi

Drive distance to Pudong Int'l Airport: 80 mins

Drive distance to Hongqiao Int'l Airport: 15 mins

7. Grand Mercure Hongqiao Shanghai



Grand Mercure is located in the center of Shanghai's western Hongqiao District, in between stations of Metro Lines 2 and 10. Its guestrooms feature microwaves, satellite flatscreen TVs, minibars and in-room safes, with fully-equipped kitchens/kitchenettes and balconies. The hotel's international food and beverage experience includes the contemporary Chinese/Cantonese restaurant and the L'Atrium restaurant, which offers breakfasts, themed buffets, French fusion a la carte services and a handpicked selection of wines. Le 98 Lounge provides a selection of cocktails and seasonal drinks. A fitness center, massage center and sauna are also available for guests looking to unwind.

📍 369 Xianxia Road, Shanghai

Distance to NECC: 30 mins by taxi

Drive distance to Pudong Int'l Airport: 60 mins

Drive distance to Hongqiao Int'l Airport: 30 mins

8. Harbour Plaza Metropolitan



Harbour Plaza Metropolitan in Shanghai (Downtown Shanghai), you'll be minutes from Great World Entertainment Center and People's Square. Take advantage of recreation opportunities such as an indoor pool. Buffet breakfasts are served on weekdays and on weekends for a fee. Featured amenities include a 24-hour front desk, multilingual staff, and luggage storage. Kitchenettes with refrigerators and stovetops. Your bed comes with down comforters and premium bedding.

📍 599 Wanyuan Road, Shanghai

Distance to NECC: 30 mins by taxi

Drive distance to Pudong Int'l Airport: 50 mins

Drive distance to Hongqiao Int'l Airport: 25 mins

Please complete the [hotel reservation form](#) and contact the official travel agent for reservation.

Official Travel Agent:

Contact Person:

Tel.:

Email:

Shanghai Vision Expo & Meeting Solutions Co Ltd

Ms. Jenny Zhang / Mr. Paul Hou

+86 (21) 5481 6051 / 5481 6052

jenny@shanghai-vision.com /

paul.hou@shanghai-vision.com

* You may contact the official travel agent for reservation at special rate



The Bund 上海外滩



Zhongshan East 1st Road, Huangpu District

A symbol of Shanghai and an epitome of Shanghai's modern history. On one side of the broad highway stand 52 blocks of tall, magnificent buildings with different architectural styles, which can be called a museum of modern world architecture. On the other side is the wide embankment, where crowds of visitors come to enjoy the beautiful scenery on the Huangpu – mother river of Shanghai. When night falls, colorful lights illuminate the whole bund area and turn it into a scene of the "wonderland".

Huangpu River Cruise Dock 黄浦江游览



Headstreams from Dianshan Lake, Zhujiatiao Town, Qingpu District

The River cruise is an important traditional tourist item in Shanghai. The Huangpu River is the mother river of Shanghai. It symbolizes Shanghai and presents visitors with the cream of the city's scenic sights on its banks. Here you will have a glimpse of Shanghai's past and look into the bright future of the city. Starting from the Bund the boat will bring you upstream to Nanpu Bridge, turn around downstream to the Yangpu Bridge and all the way to Wusong Mouth, where the river meets the Yangze River, and then turns back. The cruise company owns different kinds of cruise ships, wharves and a waiting lounge, offers boat trips to tourists.

Shanghai Disneyland Resort 上海迪士尼乐园



Huangzhao Rd, Chuanshaxinzhen, Pudong New Area

Shanghai Disney Resort, the first Disney resort in Mainland China. The resort is home to the Shanghai Disneyland theme park, featuring seven lands, as well as two themed hotels – Shanghai Disneyland Hotel and Toy Story Hotel, Disneytown, a large shopping, dining and entertainment district, a Broadway-style theatre, Wishing Star Park and other outdoor recreation areas. Shanghai Disneyland is a Magic Kingdom-style theme park featuring classic Disney storytelling and characters but with authentic cultural touches and themes tailored specifically for the people of China. Shanghai Disney Resort offers something for everyone – thrilling adventures, lush gardens where guests can relax together, and enriching interactive experiences, all with the world-class guest service that Disney is known for around the globe.

Nanjing Road Pedestrian Walkway 南京街



Nanjing East Road, Huangpu District

Nanjing Rd, famed as "No.1 Street in China", is an epitome of Shanghai's history and culture. The 1,033m long Pedestrian Street lies between the Bund and the People's Square. There are 600 shops on both sides of the walkways, the 100-year old ones, famous-brand ones, specialty shops of different trades. It is a most complete display of the varieties and brands of commodities in China, even in Southeast Asia, meeting the needs of different strata of consumers.

Laowai Street 老外街



Lane 3338, Hongmei Road

Hongmei Pedestrian Street has recently been re-named Laowaijie 101 (Foreigner's Street 101). Laowai, a commonly used term for foreigners in China, bringing the message that "Shanghai people are open to laowai. We love the laowai in Shanghai, and it's a more brotherly way of calling people from abroad." Laowai Street with a total length of more than 400 meters and is one of Shanghai's most popular hubs for Western and international cuisine. It is a car-free street of bars and restaurants where you can enjoy cuisine from Italy, Germany, France, Thailand, India and a dozen other nations, providing different kinds of food and ambiance suitable for a romantic dinner or spending a lazy Sunday afternoon. The street will also invite international bands and performers to dance and play instruments on the street from time to time.

Yuyuan Old Street 豫园老街



Houjia Road, Fangbang Middle Road, Huangpu District

Yuyuan area is a must for all tourists in the country and from abroad. It still maintains the antique style of street of ancient Chinese towns, shops stand in rows with a large collection of beautiful commodities of a great variety, large numbers of visitors crowd the place. It is a commercial center combining shopping, touring, catering and entertainment in one. The buildings look antique in the exterior and are modernized in the interior, harmonized with the entire picture of the ancient town. There is a large collection of snack shops in the area, supplying different kinds of refreshment that can please customers' palate, much to their hearts' content. Besides, here, visitors can also get different native and special products and souvenirs. It is, therefore, a tourist area much appreciated by visitors from home and abroad.

Useful Phrases



English	Chinese	Putonghua
General		
How are you?	你好吗?	nǐ hǎo ma?
Good morning	早安	zǎo ān
Good afternoon	午安	wǔ ān
Good night	晚安	wǎn 'ān
Thank you	谢谢	xiè xie
Yes / No	是 / 不是	shì / bú shì
National Exhibition and Convention Center (Shanghai)	国家会展中心(上海)	guó jiā huì zhǎn zhōng xīn (shàng hǎi)
Take taxi	打的	dǎ dī
Bus	公车	gōng chē
Metro	地铁	dī tiě
Ferry	船	Chuán
How much is it?	多少钱	duō shǎo qián
Cheaper	便宜一点	pián yi yī diǎn
Toilet	洗手间	xǐ shǒu jiān
Restaurant		
Order, please	点菜	diǎn cài
Menu	菜单	cài dān
Check, please	请结帐	qǐng jié zhàng
Receipt, please	请给收据	qǐng gěi shōu jù
Water	水	shuǐ
Tea	茶	chá
Coffee	咖啡	kā fēi
Milk	牛奶	niú nǎi
Cream	奶油	nǎi yóu
Sugar	糖	táng
Salt	盐	yán
Pepper	胡椒粉	hú jiāo fěn
Bread	面包	miàn bāo
Soup	汤	tāng
Vegetable	菜	cài
Seafood	海鲜	hǎi xiān
Beef	牛肉	niú ròu
Chicken	鸡肉	jī ròu
Pork	猪肉	zhū ròu
Vegetarian	素菜	sù cài
Potato	土豆	tǔ dòu
Rice	米饭	mǐ fàn
Noodles	面条	miàn tiáo
Sweet	甜	tián
Sour	酸	suān
Bitter	苦	kǔ
Spicy	辣	là

Useful Information



Website	
Intertextile Shanghai Home Textiles	http://www.intertextilehome.com/
Venue – NECC(SH) Website	http://www.neccsh.com/cecsh/?lang=en
Shanghai Metro	service.shmetro.com/en
Shanghai attractions	www.travelchinaguide.com/cityguides/shanghai.htm
Shanghai restaurants	https://en.tripadvisor.com.hk/Restaurants-g308272-Shanghai.html
Useful Phone No.	
Police	110
First-aid Ambulance	120
Fire Service Department	119
Traffic Accidents	122
Phone Directory	114
Weather Forecast	12121
Civil Aviation Inquiry	96990
Shanghai Tourist Hotline	962020
Railway Tickets Booking Hotline	95105105
Comprehensive Information	12580 / 118114
Railway Information	12306
More useful phone number: https://www.ciie.org/zbh/UsefulPhone/	

Organiser Contact

Messe Frankfurt (HK) Ltd
 35/F, China Resources Building
 26 Harbour Road, Wanchai, Hong Kong
 Tel : +852 2802 7728
 Email : hometextile@hongkong.messefrankfurt.com



App for transportation information



Search “didi”
at app store



IOS



Android

App for restaurants, shopping, sight-seeing suggestions



Search “dianping”
at app store



IOS



Android

App for local map



Search “baidu map”
at app store



IOS



Android

App for food, daily necessities, medicine delivery

[Remark: Outside food or beverages are not allowed in the venue.]



Search “meituan”
at app store

IOS &
Android

Intertextile Shanghai Home Textiles 2026 (Spring Edition):

www.intertextile-shanghai-hometextiles-spring.hk.com

or scan the following QR code



Shanghai attractions:

www.travelchinaguide.com/cityguides/shanghai.htm

Shanghai restaurants:

www.travelchinaguide.com/cityguides/shanghai/dining.htm

Follow us:



@intertextilehome



@intertextilehome



@intertextilehome



@法兰克福全球纺织品展览会

See you in Shanghai!

